

# **dacor**®

The Life of the Kitchen.®

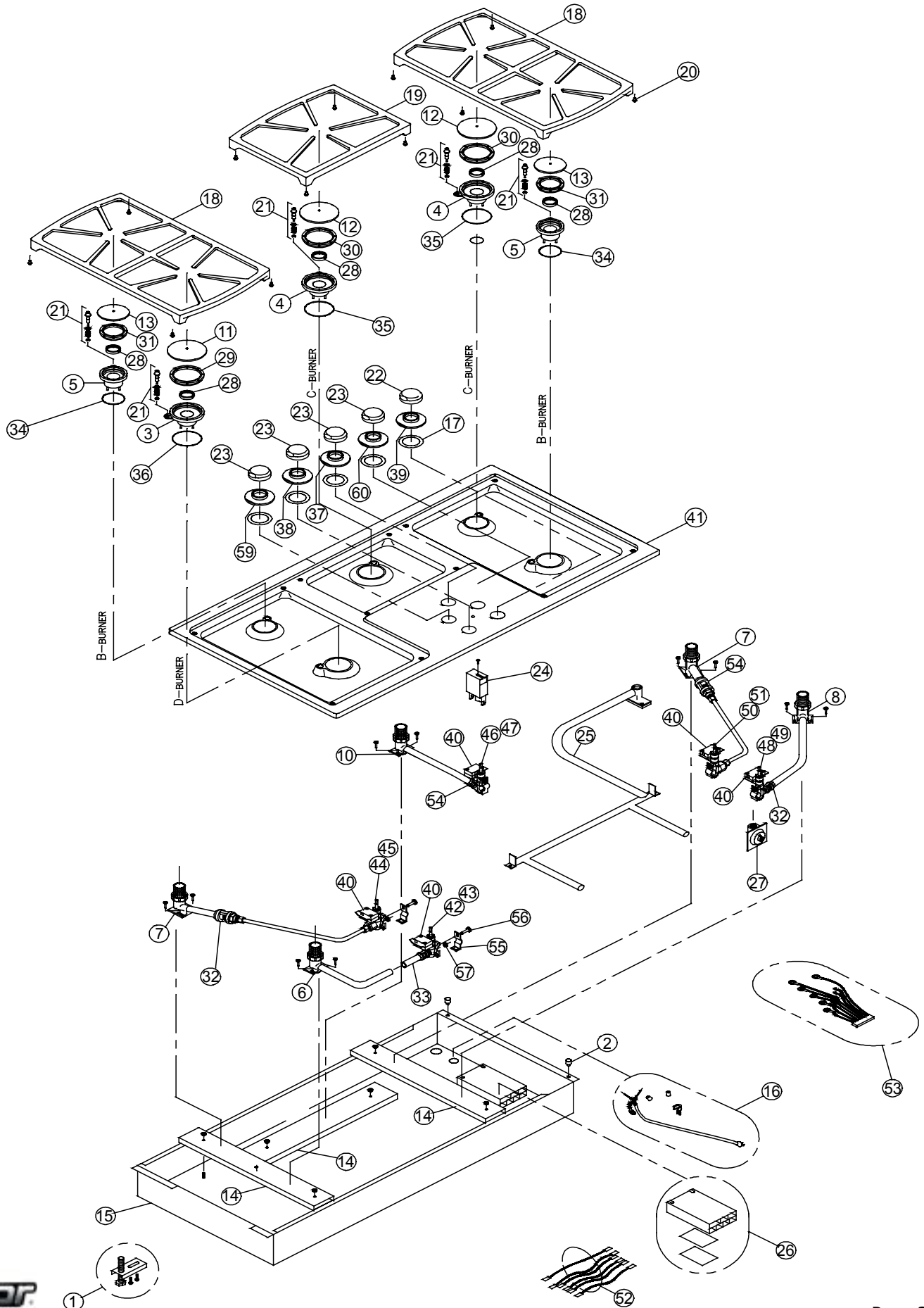
## **PARTS CATALOG**

### **SGM365 Cooktop**

<b>Page</b>	<b>Description</b>
<b>2</b>	<b>Cooktop Assembly, Before Rev P</b>
<b>3</b>	<b>Cooktop Parts, Before Rev P</b>
<b>4</b>	<b>Cooktop Assembly, Rev P and Later</b>
<b>5</b>	<b>Cooktop Parts, Rev P and Later</b>

Revised 09-29-2014

# SGM365 Cooktop Assembly, Before Rev. P



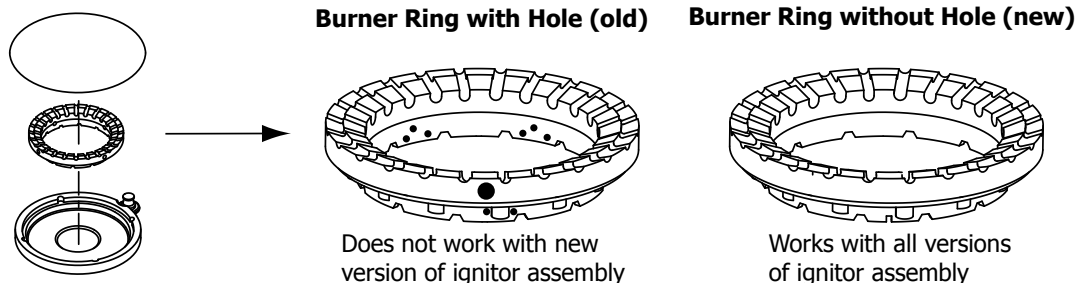
# SGM365 Cooktop Parts, Before Rev P

Item	NG	LP	Description
1	12269	12269	Bracket, Hold Down (set of 2)
2	83578	83578	Bumper, Rubber (Chassis)
3	62953	62953	Burner, Head (D)
4	62952	62952	Burner, Head (C)
5	62951	62951	Burner, Head (B)
6	62431	62431	Burner Base, LF
7	62144	62144	Burner Base, LR, RR
8	62430	62430	Burner Base, RF
10	62432	62432	Burner Base, Center
11	62022BM	62022BM	Burner Cap (D)
12	86523SB	86523SB	Burner Cap (C)
13	86524SB	86524SB	Burner Cap (B)
14	46193	46193	Channel, Support
15	46225	46225	Chassis Box
16	72765	72765	Cord Assy.
17	82973	82973	Gasket, Spill Protector
18	72466SB	72466SB	Grate Pack for B and C Burners
19	72468SB	72468SB	Grate Pac, Center
20	66916	66916	Grate Support Pad (set of 4)
21	76482-001 <sup>1</sup>	76482-001 <sup>1</sup>	Ignitor Assy <sup>1</sup>
22	82977	82977	Knob with Logo
23	82974	82974	Knob w/o Logo
24	62036	62036	Indicator Light
25	86739	86739	Manifold w/o Valves
	62474	62475	Manifold with Valves, Low Alt.
	62510	62511	Manifold with Valves, High Alt.
26	86527	86527	Spark Module Assy
27	82540	82540	Regulator
28	86405	86405	Ring Nut
29	86918 <sup>2</sup>	86918 <sup>2</sup>	Ring, Burner (D) <sup>2</sup>
30	86407 <sup>2</sup>	86407 <sup>2</sup>	Ring, Burner (C) <sup>2</sup>
31	86408 <sup>2</sup>	86408 <sup>2</sup>	Ring, Burner (B) <sup>2</sup>

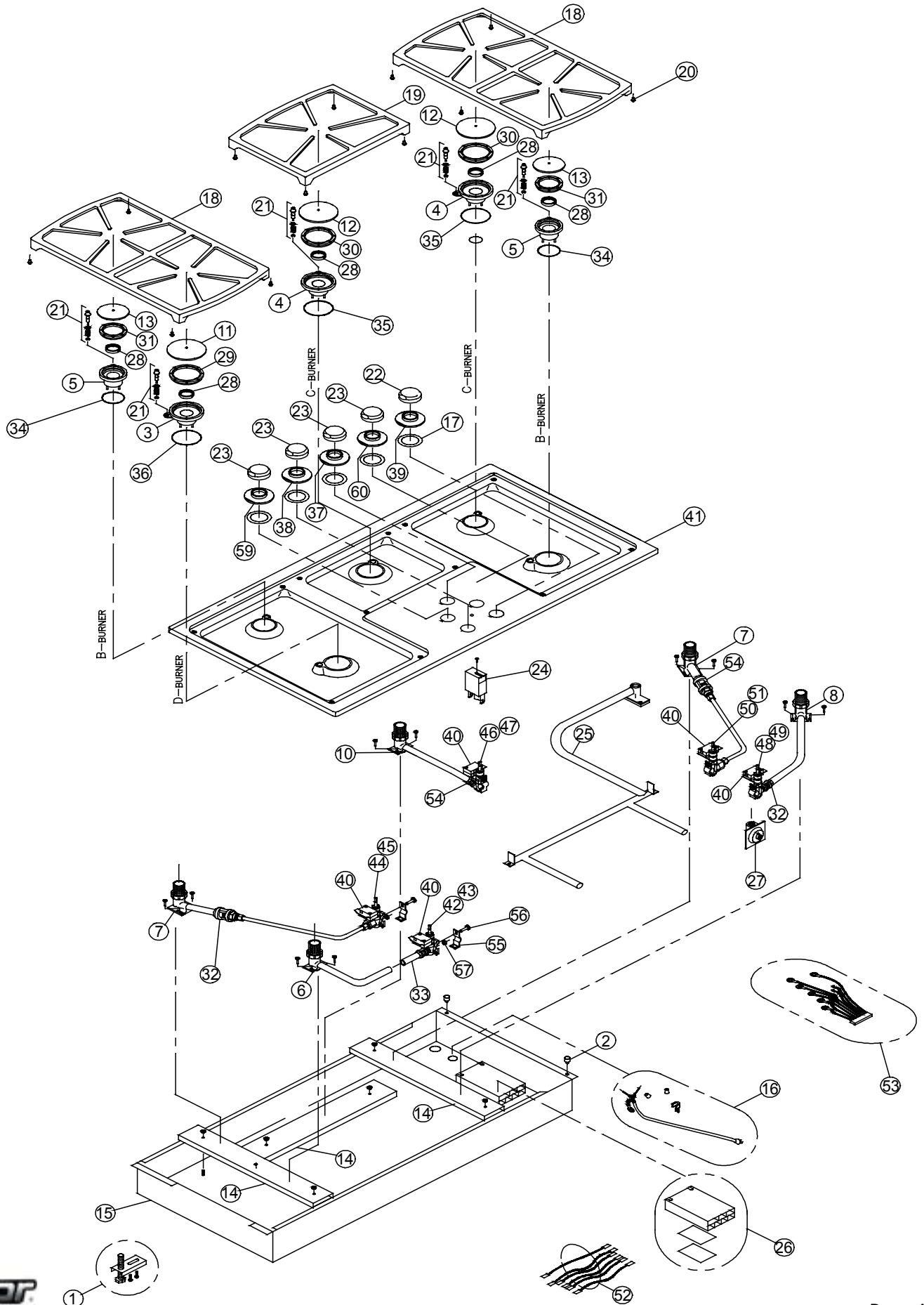
Item	NG	LP	Description
32	86372	86372	Shutter, Air, LR, RF
33	86635	86635	Shutter, Air, LF
34	86937	86937	O-Ring, (B)
35	86397	86397	O-Ring, (C)
36	86395	86395	O-Ring, (D)
37	62287SSC	62287SSC	Spill Protector, Center
38	62284SSL	62284SSL	Spill Protector, Left Front
39	62284SSR	62284SSR	Spill Protector, Right Front
40	103789	103789	Switch, Micro (Ignition)
41	36113BP	36113BP	Top Frame, Black
	36113RP	36113RP	Top Frame, White
	36113S	36113S	Top Frame, Stainless
42	86681	86679	Valve, Low Alt. LF
43	86680	86678	Valve, High Alt. LF
44	86685	86683	Valve, Low Alt. LR
45	86684	86682	Valve, High Alt. LR
46	86677	86668	Valve, Low Alt. Center
47	86669	86667	Valve, High Alt. Center
48	86689	86687	Valve, Low Alt. Right Front
49	86688	86686	Valve, High Alt. Right Front
50	86693	86691	Valve, Low Alt. Right Rear
51	86692	86690	Valve, High Alt. Right Rear
52	66653	66653	Wire Harness, Ignitors
53	72437	72437	Wire Harness, SW
54	86373	86373	Shutter, Air, Center, RR
55	86384	86384	Bracket
56	86386	86386	Screw
57	86385	86385	Washer
59	62287SSL	62287SSL	Spill Protector, Left Rear
60	62287SSR	62287SSR	Spill Protector, Right Rear
61	62933	62933	Ignitor Wire Jacket (not shown)

<sup>1</sup>**IMPORTANT:** The ignitor assembly and burner rings were redesigned on later versions of the cooktop. The older designs are no longer available. The new ignitor design only works with the newer burner ring design, while the new burner ring design is compatible with all versions of the ignitor assembly. When replacing the the ignitor assembly check to make sure the latest version of the burner ring is installed. If the burner ring has a hole on its side (see diagrams below), it must be replaced with correct size (B, C or D) of the newer version. Items 29, 30 and 31 above list the part numbers for the newer versions of the burner ring.

<sup>2</sup>For complete burner set of burner rings, order part number 62479. 62479 contains 2 B size rings, 2 C size rings and 1 D size ring.



# SGM365 Cooktop Assembly, Rev P and Later



# SGM365 Cooktop Parts, Rev P and Later

Item	NG	LP	Description
1	12269	12269	Bracket, Hold Down (set of 2)
2	83578	83578	Bumper, Rubber (Chassis)
3	62953	62953	Burner, Head (D)
4	62952	62952	Burner, Head (C)
5	62951	62951	Burner, Head (B)
6	62431	62431	Burner Base, LF
7	62144	62144	Burner Base, LR, RR
8	62144	62144	Burner Base, RF
10	62144	62144	Burner Base, Center
11	62022BM	62022BM	Burner Cap (D)
12	86523SB	86523SB	Burner Cap (C)
13	86524SB	86524SB	Burner Cap (B)
14	46193	46193	Channel, Support
15	46225	46225	Chassis Box
16	72765	72765	Cord Assy.
17	82973	82973	Gasket, Spill Protector
18	72466SB	72466SB	Grate Pack for B and C Burners
19	72468SB	72468SB	Grate Pac, Center
20	66916	66916	Grate Support Pad (set of 4)
21	76482-001	76482-001	Ignitor Assy <sup>1</sup>
22	82977	82977	Knob with Logo
23	82974	82974	Knob w/o Logo
24	62036	62036	Indicator Light
25	86739	86739	Manifold w/o Valves
	701764-01	701764-02	Manifold with Valves, Low Alt.
	701764-03	701764-04	Manifold with Valves, High Alt.
26	86527	86527	Spark Module Assy
27	82540	82540	Regulator
28	86405	86405	Ring Nut
29	86918 <sup>1</sup>	86918 <sup>1</sup>	Ring, Burner (D) <sup>1</sup>
30	86407 <sup>1</sup>	86407 <sup>1</sup>	Ring, Burner (C) <sup>1</sup>
31	86408 <sup>1</sup>	86408 <sup>1</sup>	Ring, Burner (B) <sup>1</sup>

Item	NG	LP	Description
32	86372	86372	Shutter, Air, LR, RF
33	86635	86635	Shutter, Air, LF
34	86937	86937	O-Ring, (B)
35	86397	86397	O-Ring, (C)
36	86395	86395	O-Ring, (D)
37	62287SSC	62287SSC	Spill Protector, Center
38	62284SSL	62284SSL	Spill Protector, Left Front
39	62284SSR	62284SSR	Spill Protector, Right Front
40	103789	103789	Switch, Micro (Ignition)
41	36113BP	36113BP	Top Frame, Black
	36113RP	36113RP	Top Frame, White
	36113S	36113S	Top Frame, Stainless
42	107295-01	107295-02	Valve, Low Alt. LF
43	107295-03	107295-04	Valve, High Alt. LF
44	107295-05	107295-06	Valve, Low Alt. LR
45	107295-07	107295-08	Valve, High Alt. LR
46	107293-01	107293-02	Valve, Low Alt. Center
47	107293-03	107293-04	Valve, High Alt. Center
48	107294-01	107294-02	Valve, Low Alt. Right Front
49	107294-03	107294-04	Valve, High Alt. Right Front
50	107294-05	107294-06	Valve, Low Alt. Right Rear
51	107294-07	107294-08	Valve, High Alt. Right Rear
52	66653	66653	Wire Harness, Ignitors
53	72437	72437	Wire Harness, SW
54	86373	86373	Shutter, Air, Center, RR
55	86384	86384	Bracket
56	86386	86386	Screw
57	86385	86385	Washer
59	62287SSL	62287SSL	Spill Protector, Left Rear
60	62287SSR	62287SSR	Spill Protector, Right Rear
61	62933	62933	Ignitor Wire Jacket (not shown)

<sup>1</sup>For complete burner set of burner rings, order part number 62479. 62479 contains 2 B size rings, 2 C size rings and 1 D size ring.