

The Dacor logo is rendered in a bold, italicized, sans-serif font with a metallic, 3D effect. The letters are dark with a lighter, reflective highlight on the top and left sides, giving it a sleek, modern appearance. A registered trademark symbol (®) is located at the end of the word.

# **dacor**

The Life of the Kitchen.®

A faded background image of a kitchen featuring a Dacor METB304 cooktop. The cooktop is a stainless steel gas model with five burners and a control panel on the left. A white bowl sits on one of the burners. The kitchen has wooden cabinets and a countertop with various items like a fruit basket and a coffee maker.

## **PARTS CATALOG**

### **METB304 Cooktop**

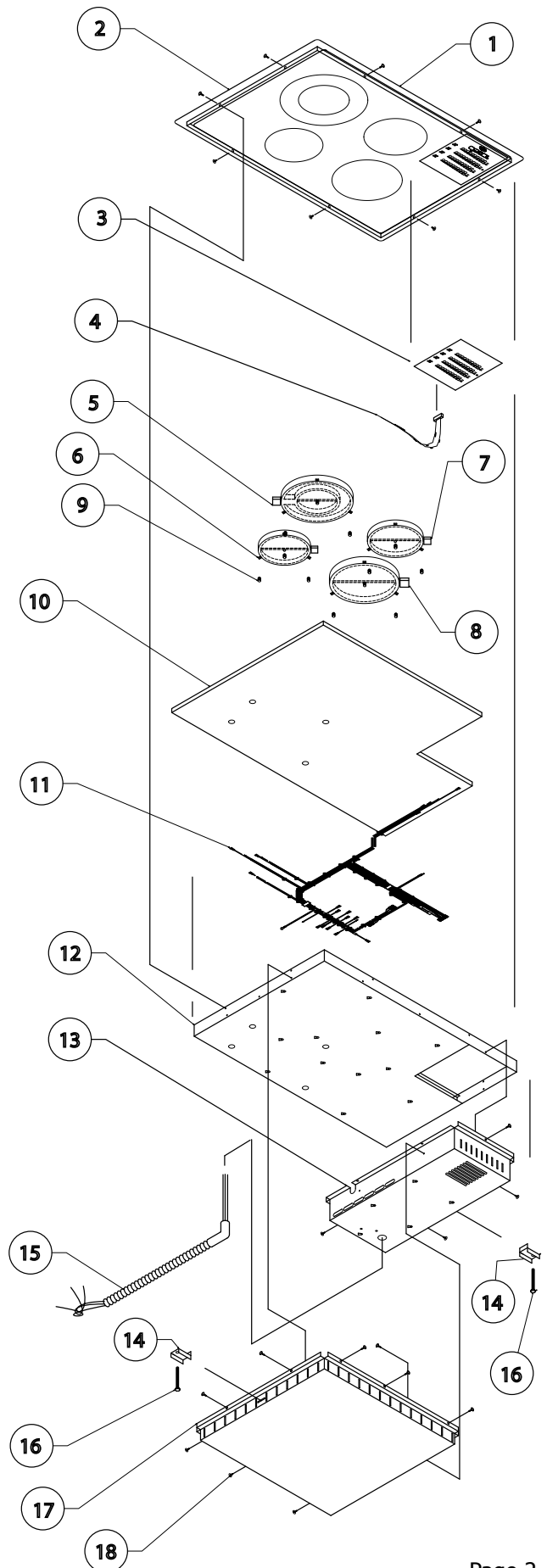
| <b>Page #</b> | <b>Description</b>                 |
|---------------|------------------------------------|
| <b>2</b>      | <b>MET304 Chassis Assembly</b>     |
| <b>3</b>      | <b>MET304 Control Box Assembly</b> |

Revised 05-02-2013

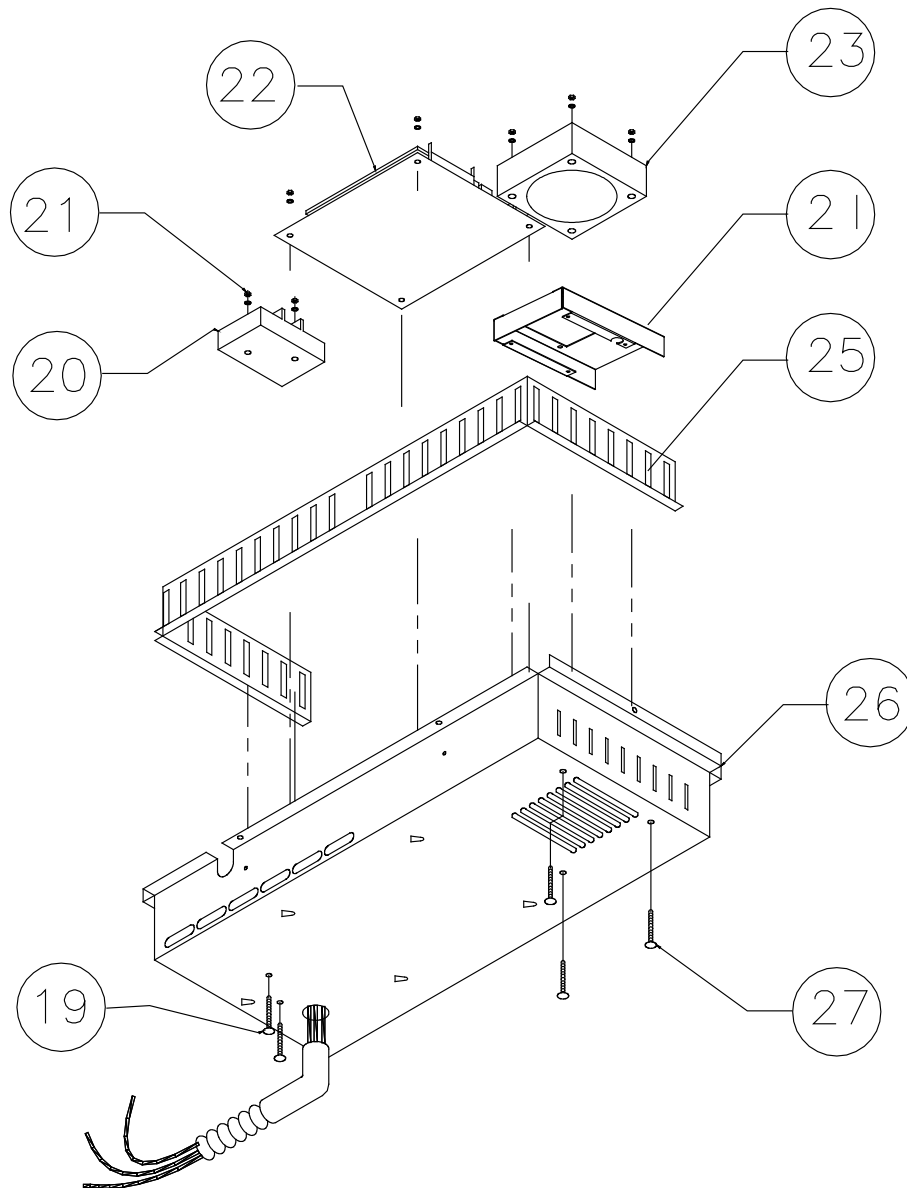
# MET304 Cooktop Chassis Assembly

| Item | Description                 | Part # |
|------|-----------------------------|--------|
| 1*   | Black Panel Assy            | 12613  |
|      | Black/Gray Panel Assy       | 12621  |
|      | Stainless Finish Panel Assy | 12619  |
| 2    | #8 x 3/8 Frame Truss Screw  | 83024  |
| 3    | Display Board               | 72532  |
| 4    | Ribbon Cable                | 62063  |
| 5    | Heater, 1000/2400W          | 66134  |
| 6    | Heater, 1500W               | 66129  |
| 7    | Heater, 1200W               | 66128  |
| 8    | Heater, 1800W               | 66130  |
| 9    | Burner Spring               | 83381  |
| 10   | Insulation Blanket          | 26800  |
| 11   | Wiring Harness              | 72650  |
| 12   | Chassis Weldment            | 27821  |
| 13   | Control Box (see page 3)    |        |
| 14   | Hold Down Bracket           | 12045  |
| 15   | Conduit                     | 66798  |
| 16   | 1/4-20 x 3.50 Hex Head Bolt | 83065  |
| 17   | Heat Shield Weldment        | 26646  |
| 18   | 1/4-20 x 3.50 Hex Head Bolt | 83024  |
| -    | Cooktop Cleaning Creme      | A300   |
| -    | Razor Scraper               | 82499  |

\* Glass replacement may require that new holes be drilled in the chassis.



# MET304 Cooktop Control Box Assembly



| Item | Description            | Part # |
|------|------------------------|--------|
| 19   | Terminal Block Screws  | 83326  |
| 20   | Terminal Block         | 62052  |
| 21   | Nut, Keps #10-24       | 83009  |
| 22   | Power Board            | 72530  |
| 23   | Cooling Fan            | 62077  |
| 24   | Fan Mounting Bracket   | 36459  |
| 25   | Control Box Air Baffle | 36488  |
| 26   | Control Box Weldment   | 27846  |
| 27   | Fan Screw              | 83022  |