



The Life of the Kitchen.®

# PARTS CATALOG

## CER304 Cooktop

**IMPORTANT:** This appliance may have some parts that are **No Longer Available (NLA)**. If the part you need is no longer available, please contact Dacor for a possible solution.

### DACOR CARES PROGRAM NLA Part Locator Service

**Customer Contact Number:**

(800) 793-0093 ex. 2813  
Hours: 6:00 AM - 5:00 PM Pacific Time

**Service Agent/Technician Contact Number:**

(800) 793-0093 ex. 3814  
Hours: 7:00 AM - 4:00 PM Pacific Time

**Web Inquiries:** [www.dacor.com/dacorcares](http://www.dacor.com/dacorcares)

**Email Inquiries:** [dacorcares@dacor.com](mailto:dacorcares@dacor.com)

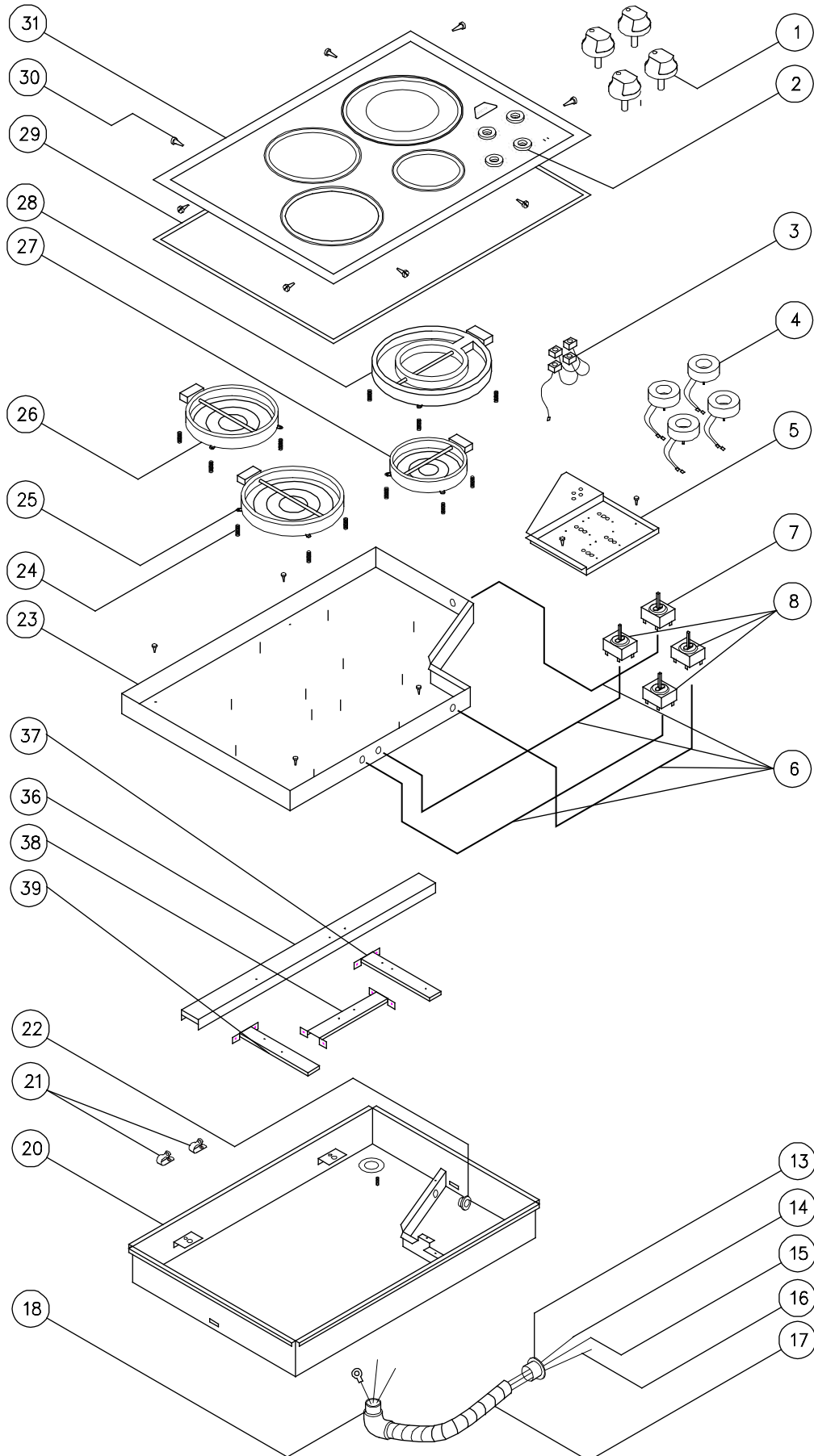
Please provide the following information:

- Your name and phone number
- Product model number
- Product serial number
- The part number(s) you need

Page #	Description
2	CER304 Assembly
3	CER304 Parts

Revised 02-28-2012

# CER304 Cooktop Assembly



# CER304 Cooktop Parts

Item	Part # CER304B CER304BT CER304R	Part # CER304BG CER304RF	Description
<b>1</b>	82167B/W	82167B/W	Control Knob <sup>1</sup>
<b>2</b>	86218	86218	Spill Protector Ring <sup>1</sup>
<b>3</b>	700568	700568	Heat Indicator
<b>4</b>	82169	NA	Light Ring
<b>5</b>	26651	36750	Control Panel
<b>6</b>	62631	72332	Wire Harness
<b>7</b>	700658	700658	Switch, Dual Circuit
<b>8</b>	82180	82180	Infinite Switch, Single
<b>13</b>	83133	83133	Bushing, 1/2" Red Conduit
<b>14</b>	14359	NA <sup>2</sup>	L1 Power Lead, Black
<b>15</b>	14360	NA <sup>2</sup>	L2 Power Lead, Red
<b>16</b>	14267	NA <sup>2</sup>	Green Ground Wire
<b>17</b>	83346	83346	1/2" Flex Conduit
<b>18</b>	82195	82195	1/2" Flex Connector, 90°
<b>20</b>	13273	13566	Chassis Assy
<b>21</b>	82400	82400	Cable Clamp
<b>22</b>	83056	83056	Bushing
<b>23</b>	13274	NA	Element Weld Box
<b>24</b>	83277	100644	Spring, Complete Element Mounting

Item	Part # CER304B CER304BT CER304R	Part # CER304BG CER304RF	Description
<b>25</b>	66131	NA	Element, LF, 1900W
	NA	66843	Element 2000W
<b>26</b>	66130	66842	Element, LR, 1800W
<b>27</b>	82803	66841	Element, CF, 1200W
<b>28</b>	66844	NA	Elmnt, Dual,RR, 2000/1000W
	NA	66133	Elmnt, Dual, 2200/1000W
<b>29</b>	13208	13208	Counter Gasket
<b>30</b>	83024	83024	Screw, #8 x 3/8"
<b>31</b>	26802B/W	NA	Ceran Panel Assy before SN TA8230286
	13320BT/R	NA	Ceran Panel Assy after SN TA8230286
	NA	13554BG/ RF	Assy, Glass/Panel
<b>36</b>	NA	27771	Weld, Long Channel
<b>37</b>	NA	27772	Weld, Short Channel, RH
<b>38</b>	NA	27773	Weld, Bracket
<b>39</b>	NA	27776	Weld, Short Channel, LH

<sup>1</sup> When ordering replacement knobs ALWAYS replace the spill protector ring as well.

<sup>2</sup> Power leads are part of wiring harness (item 6) on these models.

Part no longer available? Call Dacor: (800) 793-0093 ex. 3814